

Large Bush, Point Pleasant Park, Enamel on canvas, 12" x 16"

FOLDING PANEL:

Waterfall, Enamel on canvas, 24" x 20"

GALLERY PAGE AND STRANGE is a contemporary gallery located in the historic Granville Square of downtown Halifax, Nova Scotia. In close proximity to NSCAD University and other fine art shops and restaurants, the gallery is situated within the heart of the cultural district of the city.

**GALLERY  
PAGE AND  
STRANGE**

Granville Square • 1869 Granville St. • Halifax, NS B3J 1Y1  
t: 902.422.8995 • f: 902.423.0059 • [pageandstrange.com](http://pageandstrange.com)

GALLERY HOURS: Monday - Friday 10am - 5pm  
Saturday 11am - 5pm or by appointment

© 2009 GALLERY PAGE AND STRANGE Printed in Canada Design: Strange Ideas

**GERALD FERGUSON**

**LANDSCAPES 2008 - 2009**

March 12 - April 2, 2010

**GALLERY  
PAGE AND  
STRANGE**



Rocks & Trees, Peggy's Cove  
Enamel on canvas, 16" x 20"



Lake and Trees  
Enamel on canvas, 16" x 20"



Pine Trees and Stump  
Enamel on panel, 8" x 10"

## LANDSCAPES 2008 - 2009

Following the Landscapes done with a 4" roller shown at Gallery Page and Strange last year, I wanted to do paintings on panels with a brush. This was the first time I have consistently used a brush in over forty years. I wanted to go out of doors and do the unpardonable plein air drawing. It was cold so I drew inside my car (plein air en voiture). I brought the sketches back to the studio and from them made felt pen drawings. Using the felt pen drawings as a guide, I painted 8x10" and a few 10x14" panels. So that the brush would not drag, I primed the panels with mat medium. The most successful panels I used as a guide to paint on canvas which was also primed with mat medium. Most of the panels and canvases are from sites around the province with place names, a few are from secondary sources.

The canvases vary in size from 12x16" to 20x24". Depending on the size of the canvas, the widest brush I used was in proportion to the width of my 4" roller.

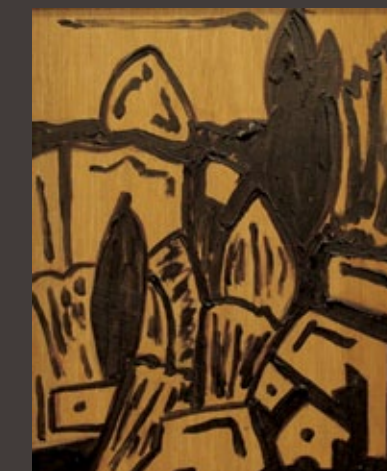
I did over 100 panels and about 40 canvases. I edited the panels down to about 50 and the canvases to about 25. I further edited and framed the panels and canvases for this exhibition.

## BIOGRAPHICAL NOTES

GERALD FERGUSON received a master of fine arts degree from Ohio University in 1966. Ferguson came to Canada in 1968 to teach at the Nova Scotia College of Art and Design. Since that time he has maintained a vigorous studio practice, regularly exhibiting his work nationally and internationally. In his 30-plus year exhibition career, Ferguson has had over 35 solo exhibitions and is represented in numerous public collections including the Museum of Modern Art, New York; Museum Stuzki, Lodz, Poland; the National Gallery of Canada, among others. Exhibitions in Canada include the National Gallery, the Art Gallery of Ontario, the Winnipeg Art Gallery, and the Art Gallery of Nova Scotia. Internationally, his work has been included in exhibitions at the Museum of Modern Art in New York and Ferguson has also exhibited in Germany, Great Britain, Poland, France and Japan.



Daisies  
Enamel on panel, 9" x 10"



Bushes and Rocks, Blue Rocks  
Enamel on panel, 10" x 8"